

Reference No.	Part No.	Description
1	OD 003460	Air Motor
2	OD 005510	Woodruff Key
3	OD 005511	Gear Spacer
4	OD 002122	Pinion Gear
5	OD 001816	Needle Bearing
6	OD 005512	Motor Bracket
7	OD 142034	(2) Socket Head Cap Screw
8	OD 005513	Support Bracket
9	OD 102412	(4) Flat Socket Cap Screw
10	OD 00BH88	Needle Bearing
11	OD 0FT10	Thrust Bearing
12	OD 005514	Bearing Collar
13	OD 102412	(2) Flat Socket Cap Screw
14	OD 005515	Main Gear
15	OD 001220	Thrust Bearing
16	OD 001212	Needle Bearing
17	OD 00B188	Needle Bearing
18	OD 005516	Retainer Collar
19	OD 001878	Roll Pin
20	OD 00Ew58	(2) Thrust Bearing
21	OD SCE108	(2) Needle Bearing
22	OD 005517	Spiral Gear
23	OD 005518	Feed Hub
24	OD 005519	Driveshaft
25	OD 00B128	Needle Bearing
26	OD 005520	Spindle Collar
27	OD 102412	(2) Flat Socket Cap Screw
28	OD 102412	(2) Flat Socket Cap Screw
29	OD 005521	Access Cap
30	OD 005522	Frame

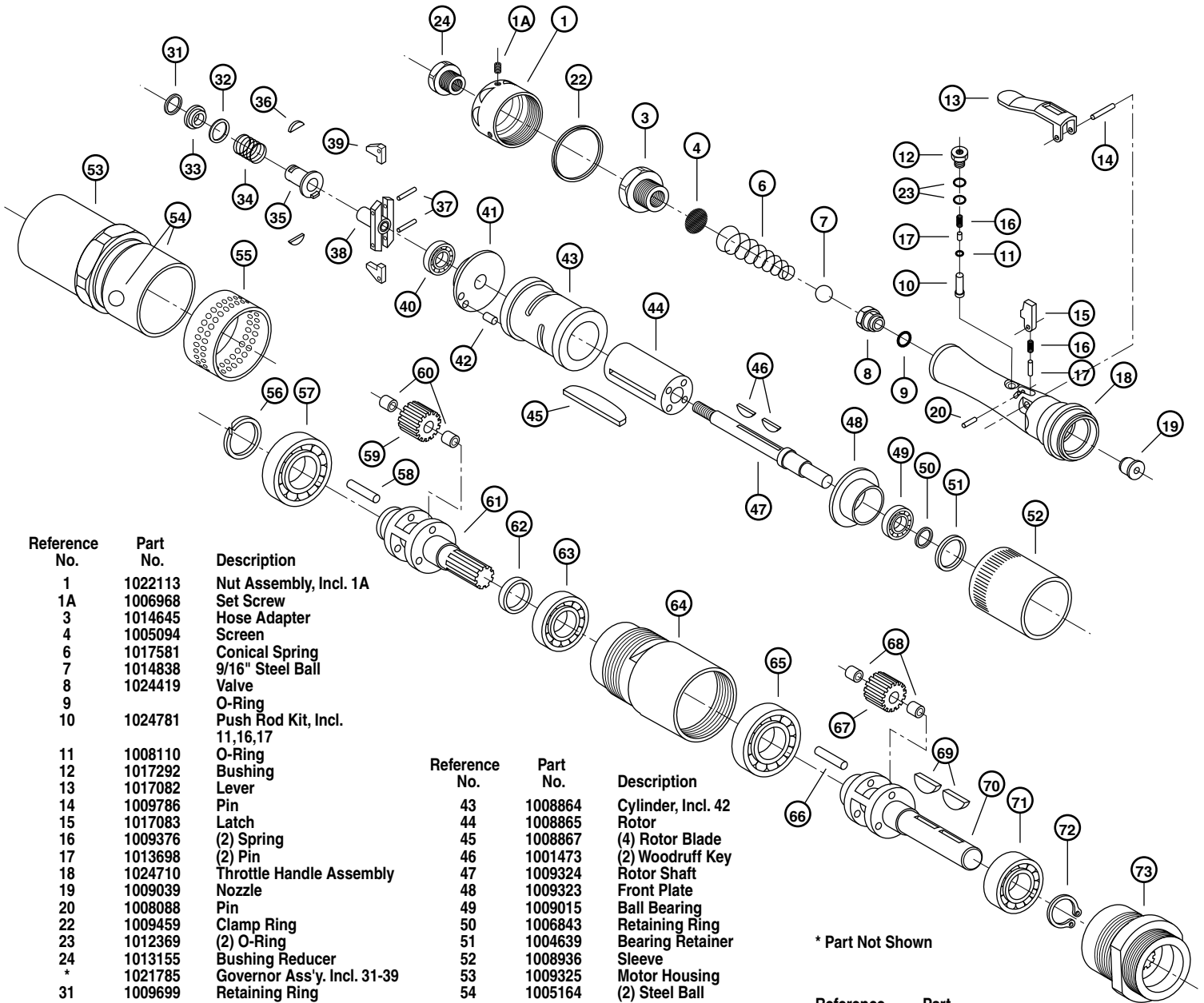
Reference No.	Part No.	Description
31	OD 142012	(2) Socket Head Cap Screw
32		Locator Block, See Chart
33	OD 005524	Locking Saddle
34	OD 005525	Guide Bushing
35	OD 005526	Locking Nut
36	OD 005527	Retainer Plate
37	OD 102458	(4) Socket Head Cap Screw
38	OD 005528	Spiral Pinion Gear
39	OD 005529	Spindle Key
40	OD 005530	Feed Control Spindle
41	OD 001012	(2) Needle Bearing
42	OD 005531	Feed Spindle Collar
43	OD 560856	(2) Socket Head Set Screw
44	OD 005532	Feed Handle
45	OD 102412	(2) Flat Socket Cap Screw
46	OD 005533	Tool Holder Key
47	OD 005534	1-1/2" Toolholder
47A	OD 005535	2-1/4" Toolholder
48	OD 561856	(2) Socket Head Set Screw
49	OD 005536	Blade Lock (1-1/2")
49A	OD 005537	Blade Lock (2-1/4")
50	917-0001	(2) Differential Screw
51	OD 005502	Control Knob
52	OD 005503	Shoulder Screw
53	OD 005538	Drop Swivel
54	OD 005539	Male Plug
55	OD 005540	Support Plate, Right
55	OD 005541	Support Plate, Left
56	OD 005542	(8) Flate Head, Countersink Screw

Locator Block Chart

Reference No.	Part No.	Description
32	OD 005523	3/4" (19.1 mm)
32	OD 005543	7/8" (22.2 mm)
32	OD 005544	1" (25.4 mm)
32	OD 005545	1-1/8" (28.6 mm)
32	OD 005546	1-1/4" (31.8 mm)
32	OD 005547	1-3/8" (34.9 mm)
32	OD 005548	1-1/2" (38.1 mm)
32	OD 005549	1-5/8" (41.3 mm)
32	OD 005550	1-3/4" (44.5 mm)
32	OD 005551	1-7/8" (47.6 mm)
32	OD 005552	2" (50.8 mm)
32	OD 005553	2-1/8" (54.0 mm)
32	OD 005554	2-1/4" (57.2 mm)
32	OD 005555	2-1/2" (63.5 mm)

PARTS LIST

Air Motor Gear Set



Reference No.	Part No.	Description
1	1022113	Nut Assembly, Incl. 1A
1A	1006968	Set Screw
3	1014645	Hose Adapter
4	1005094	Screen
6	1017581	Conical Spring
7	1014838	9/16" Steel Ball
8	1024419	Valve
9		O-Ring
10	1024781	Push Rod Kit, Incl. 11,16,17
11	1008110	O-Ring
12	1017292	Bushing
13	1017082	Lever
14	1009786	Pin
15	1017083	Latch
16	1009376	(2) Spring
17	1013698	(2) Pin
18	1024710	Throttle Handle Assembly
19	1009039	Nozzle
20	1008088	Pin
22	1009459	Clamp Ring
23	1012369	(2) O-Ring
24	1013155	Bushing Reducer
*	1021785	Governor Ass'y. Incl. 31-39
31	1009699	Retaining Ring
32	1011483	Shim (As Required)
33	1011482	Spring Seat
34	1009152	Spring
35	1009120	Governor Valve
36	1009099	(2) Key
37	1008839	(2) Pin
38	1009119	Hub
39	1009121	(2) Gov. Weights
*	1025023	Motor Ass'y, Incl. 40-51
40	1009017	Ball Bearing
41	1008935	Rear Plate

Reference No.	Part No.	Description
43	1008864	Cylinder, Incl. 42
44	1008865	Rotor
45	1008867	(4) Rotor Blade
46	1001473	(2) Woodruff Key
47	1009324	Rotor Shaft
48	1009323	Front Plate
49	1009015	Ball Bearing
50	1006843	Retaining Ring
51	1004639	Bearing Retainer
52	1008936	Sleeve
53	1009325	Motor Housing
54	1005164	(2) Steel Ball
55	1009326	Baffle Ring
56	1009530	Retaining Ring
57	1009033	Ball Bearing
58	1009331	(3) Planet Pin
59	1009332	(3) Planet Gear
60	1009303	(6) Needle Bearing
61	1009598	Planet Cage
62	1009592	Planet Cage Washer
63	1005003	Ball Bearing
64	1013858	Internal Gear
65	1009333	Ball Bearing

* Part Not Shown

Reference No.	Part No.	Description
66	1009331	(3) Planet Pin
67	1009594	(3) Planet Gear
68	1009303	(6) Needle Bearing
69	1001311	(2) Woodruff Key
70	1015643	Planet Cage, Incl.:
*	1015356	Retaining Ring
71	1010135	Ball Bearing
72	1012796	Retaining Ring
73	1015641	Internal Gear